


ONKYO® SERVICE MANUAL

Integrated Stereo Amplifier MODEL A-8057

Silver and Black models

| | |
|---------|--------------------------|
| UDN, UD | 120V AC, 60Hz |
| UG | 220V AC, 50Hz |
| UW | 120V or 220V AC, 50/60Hz |

SAFETY-RELATED COMPONENT WARNING!!

COMPONENTS IDENTIFIED BY MARK  ON THE SCHEMATIC DIAGRAM AND IN THE PARTS LIST ARE CRITICAL FOR RISK OF FIRE AND ELECTRIC SHOCK. REPLACE THESE COMPONENTS WITH ONKYO PARTS WHOSE PARTS NUMBERS APPEAR AS SHOWN IN THIS MANUAL.

MAKE LEAKAGE-CURRENT OR RESISTANCE MEASUREMENTS TO DETERMINE THAT EXPOSED PARTS ARE ACCEPTABLY INSULATED FROM THE SUPPLY CIRCUIT BEFORE RETURNING THE APPLIANCE TO THE CUSTOMER.

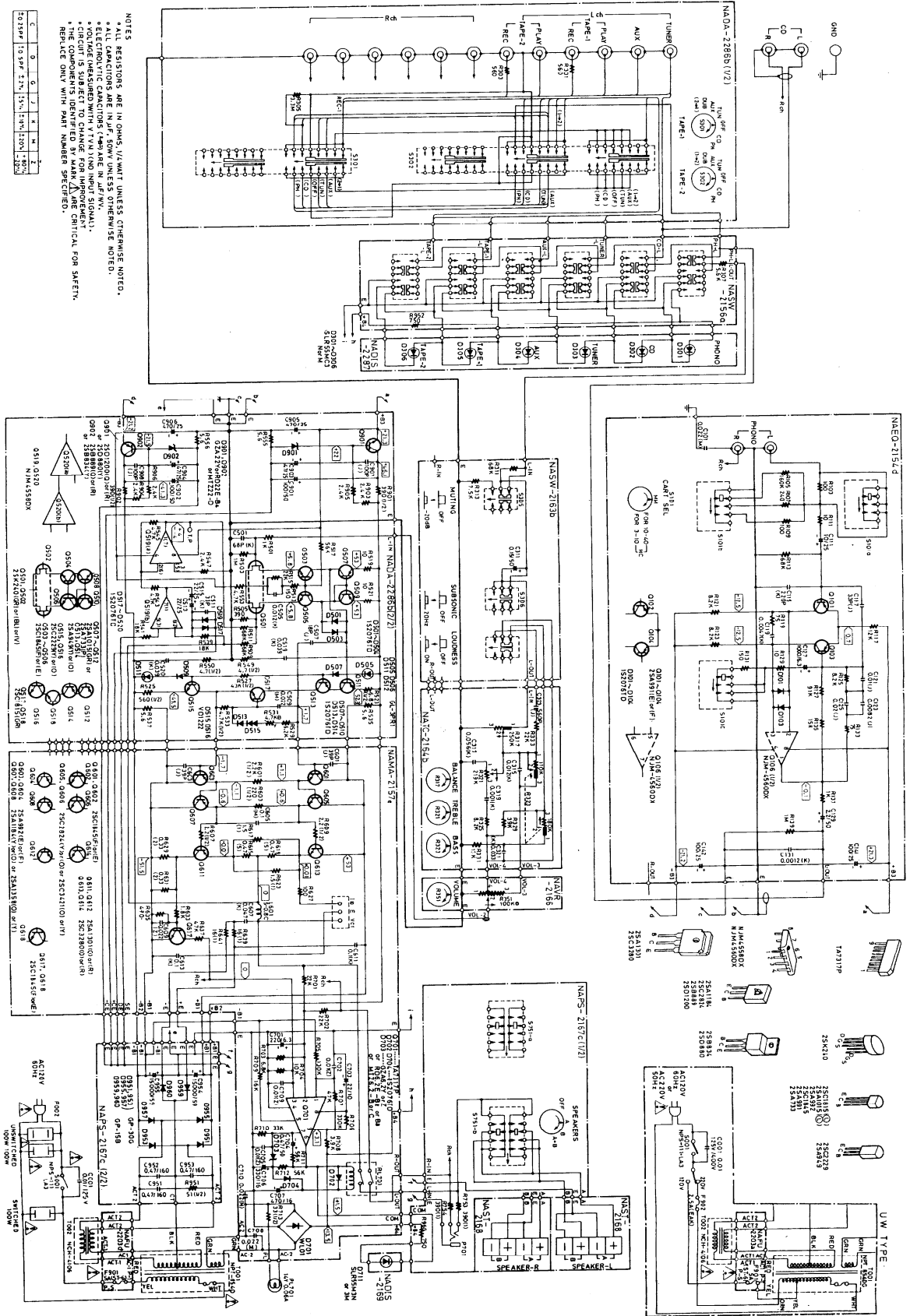
TABLE OF CONTENTS

| Item | Page |
|----------------------------------|--------|
| Specifications | 2 |
| Block diagram | 2 |
| Precautions | 4 |
| Main amplifier adjustment | 4 |
| Front panel facilities | 5 |
| System connections | 5 |
| Exploded view | 6 |
| Parts list | 7 |
| Printed circuit board parts list | 8 |
| Packing procedures | 10 |
| Printed circuit board view | 11 |
| Schematic diagram | 13, 17 |



SCHEMATIC DIAGRAM

(120V Model, 120V/220V Model)



SPECIFICATIONS

Power Output: 65 watts per channel, min. RMS, at 8 ohms, both channels driven, from 20 Hz to 20 kHz, with no more than 0.018% THD.

Total Harmonic Distortion: 0.018% at rated power

IM Distortion: 0.005% at rated power

Damping Factor: 50 at 8 ohms

Frequency Response: 2 – 50,000 Hz ± 1 dB

RIAA Deviation (MM): 20 – 20,000 Hz ± 0.5 dB

Sensitivity and Impedance:
 Phono(MM): 2.5 mV/50 kohms
 Phono(MC): 160 μV/100/220 ohms
 Tuner: 150 mV/50 kohms
 Tape Play: 150 mV/50 kohms
 Tape Rec: 150 mV/1.5 kohms (phono)

Phono Overload: 200 mV RMS at 1 kHz, 0.018% THD

Bass Control: ±8 dB at 70 Hz
Treble Control: ±8 dB at 20,000 Hz

Signal to Noise Ratio: Phono(MM): 80 dB (IHF A-202, 5 mV input, 1 watt output)

Phono(MC): 70 dB (IHF A-202, 0.5 mV input, 1 watt output)

Tuner & Tape: 84 dB (IHF A-202, 0.5 V input, 1 watt output)

Muting: –20 dB
Loudness Control: +6 dB at 70 Hz, +5 dB at 20 k Hz
Subsonic Filter: 15 Hz (6 dB/Octave)
High Cut (TREBLE MIN): 6 kHz (6 dB/Octave)

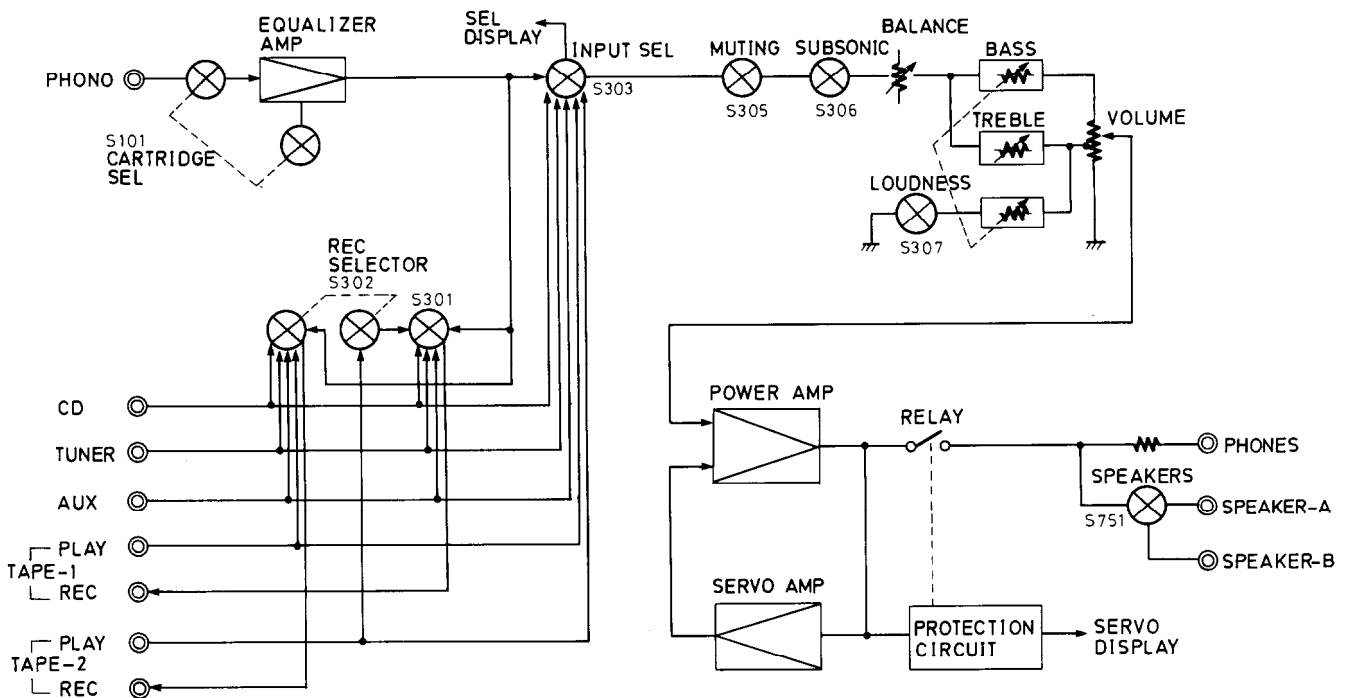
General

Power Supply: AC120 V, 60 Hz (D model)
 AC220 V, 50 Hz (G model)
 AC120 V or 220 V, 50/60 Hz (W model)

Semiconductors: IC: 4 TR: 38 Diode: 43
Dimensions: 435(W) × 144(H) × 391(D)mm
 17-1/8" × 5-5/8" × 15-3/8"
Weight: 10.5 kg. (23.2 lbs.)

Specifications and features are subject to change without notice.

BLOCK DIAGRAM



PRECAUTIONS

1. Replacing the fuses

For continued protection against risk fire, replace only with same type and same rating fuse.

| CIRCUIT NO. | PARTS NO. | DESCRIPTION |
|-------------|-----------|---|
| F901 | 252050 | 54(ST-6), Primary fuse (120 V model) |
| F901 | 252075 | 2.5A-SE-EAK, Primary fuse (220 V model) |
| F902 | 252075 | 2.5A-SE-EAK, Primary fuse (120 V/220 V model) |
| F701 | 252070 | 1A-SE-EAK, Secondary fuse (220 V model) |

2. Replacing the lamp

This unit uses the lamp listed below.

| CIRCUIT NO. | PARTS NO. | DESCRIPTION |
|-------------|-----------|-----------------|
| PL701 | 210183 | PL14V0.06AW-2.0 |

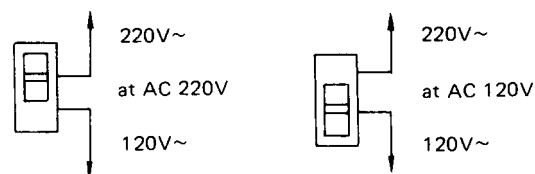
3. Insulation resistance measurement (Only U.S.A model)

Connect the insulating-resistance tester between the plug of power supply cable and the terminal GND on the back panel.

Specification; 500V more than 10 M Ω

4. Voltage selector (rear panel)

Worldwide models are equipped with a voltage selector to conform with local power supplies. Be sure to set this switch to match the voltage of the power supply in your area before turning the power switch on. Voltage is changed by sliding the groove in the switch with a screwdriver or similar instrument to the up or down position. Confirm that the switch has been moved all the way to the up or down before turning the power switch on. If there is no voltage selector switch on the unit you have purchased, it can only be used in areas where the power supply voltage is the same as that of the unit.



MAIN AMPLIFIER ADJUSTMENT

MAIN AMPLIFIER ADJUSTMENT

Set the all control knobs to standard position

Standard knob position

| | |
|--------------------|---------|
| INPUT SELECTOR | CD |
| CARTRIDGE SELECTOR | MM |
| REC. SELECTOR | OFF |
| MODE | STEREO |
| MUTING | OFF |
| SUBSONIC FILTER | OFF |
| BALANCE | Center |
| VOLUME | Minimum |
| LOUDNESS | OFF |
| BASS | DEFEAT |
| TREBLE | DEFEAT |
| SPEAKERS | A |

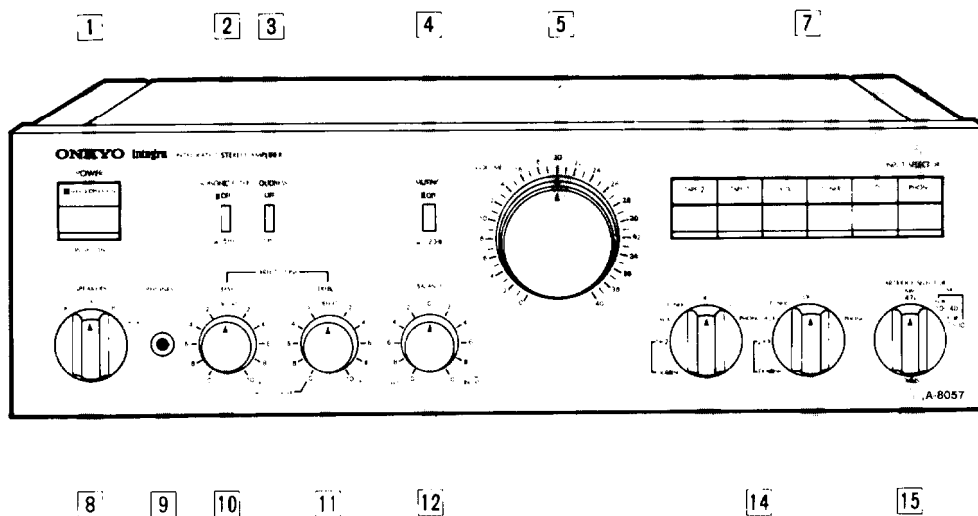
IDLING CURRENT ADJUSTMENT

1. Connect the DC voltmeter between I_{ID} and V_{CT} terminals.
2. Adjust the voltage to 12 \pm 5mV with semi-fixed resistor of R531 and R532.

NOTES: Adjust after switching on for 5 minutes.

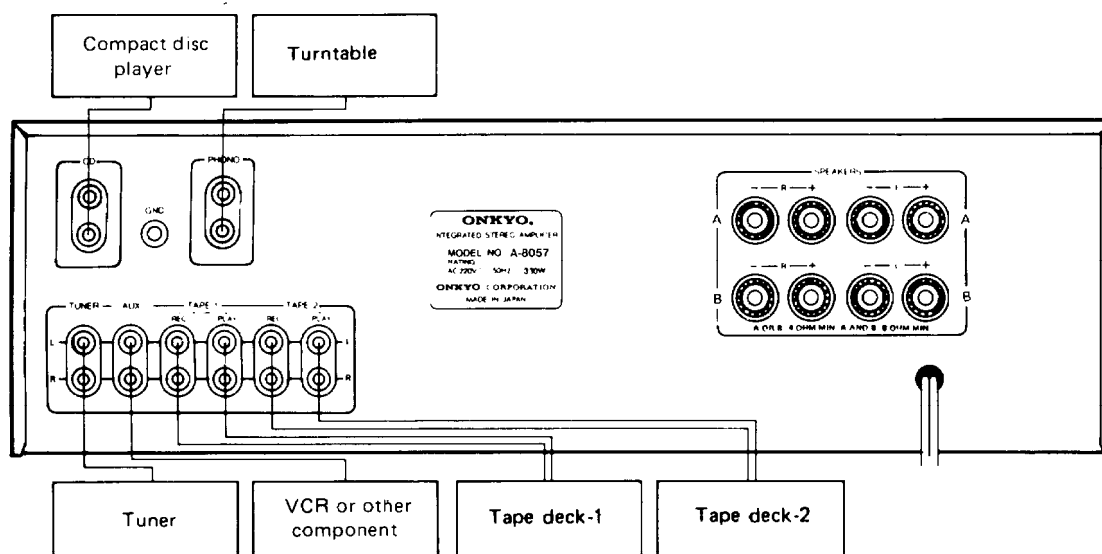
VOLUME Minimum
LOAD. Open

FRONT PANEL FACILITIES

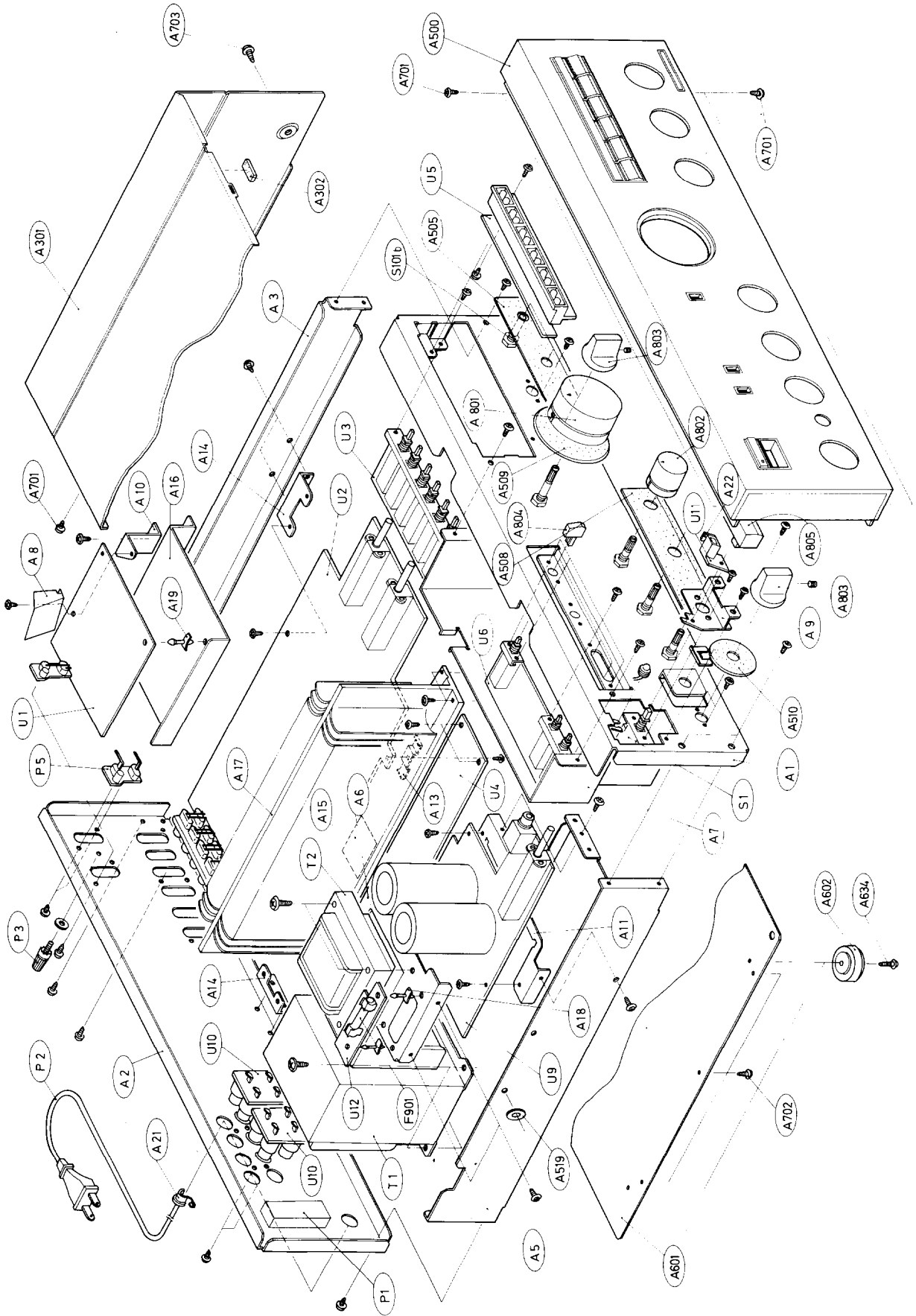


1. Power switch (POWER)
2. Subsonic filter (SUBSONIC FILTER)
3. Loudness control (LOUDNESS)
4. Muting switch (MUTING)
5. Volume control (VOLUME)
7. Input selector switches (INPUT SELECTOR)
8. Speaker selector (SPEAKERS)
9. Headphones jack (PHONES)
10. Bass control (BASS)
11. Treble control (TREBLE)
12. Balance control (BALANCE)
14. Recording source selectors (REC. SELECTOR)
15. Cartridge selector (CARTRIDGE SELECTOR)

SYSTEM CONNECTIONS



CHASSIS-EXPLODED VIEW



CHASSIS-EXPLODED VIEW-PARTS LIST

| REF. NO. | PART NO. | DESCRIPTION | REF. NO. | PART NO. | DESCRIPTION | REF. NO. | PART NO. | DESCRIPTION |
|----------|-----------|-----------------------------|-----------|--------------------|--|----------|-----------|--|
| A1 | 27110227C | Front bracket | | 28321905B | Kbob (POW), [BLACK] | | 17994586C | NADA-2286c, Power amplifier pc board ass'y 1 [G] [Q] |
| A2 | 27120690A | Back panel [D] | Q611,Q612 | 2201363 or 2201362 | 2SA1301(O) or 2SA1301(R), Transistors | U3 | 12028556A | NASW-2156a, Input selector switch pc board ass'y [D] [W] |
| A3 | 27120693A | Back panel [G] | Q613,Q614 | 2201373 or 2201372 | 2SC3280(O) or 2SA3280(R), Transistors | | 12034556B | NASW-2156b, Input selector switch pc board ass'y [G] [Q] |
| A5 | 27115132C | Side bracket (R) | | 230876 | NPT-854D, Power transformer [D] | U4 | 17988557E | NAMA-2157e, Power amplifier pc board ass'y 2 [D] [W] |
| A6 | 27130371B | Bracket (L) | △T1 | | | | 17994557F | NAMA-2157f, Power amplifier pc board ass'y 2 [G] [Q] |
| A7 | 27130386 | Bracket (TP) | | 230877A | NPT-854G, Power transformer [G] | | 12028587 | NADIS-2287, LED pc board ass'y |
| A8 | 27130370 | Bracket, shield | | 230878 | NPT-854DG, Power transformer [W] | U5 | 17988563B | NASW-2163b, Muting switch pc board ass'y |
| A9 | 27130392 | Shield plate (EQ) | | 2300013 | NPT-854Q, Power transformer [Q] | U7 | 12028564B | NATC-2164b, Tone controle pc board ass'y |
| A10 | 27140944B | Bracket (POW) | | | | U8 | 12913566 | NAVR-2166, Volume controle pc board ass'y |
| A11 | 27140945 | Bracket (PC) | | 231061 | NCH-4106, Choke coil | U9 | 17988567C | NAPS-2167c, Speaker switch & Power supply pc board ass'y |
| A13 | 27140948 | Bracket (TR) | | 25035015A | NPS-111LA3, Power switch | U10 | 12913568 | NAST-2168, Speaker terminal pc board ass'y [D] [W] |
| A14 | 27140693 | Bracket (BP) | △T2 | 25065123 | NSS-1258P, Slide switch [W] | | 12034568A | NAST-2168a, Speaker terminal pc board ass'y [G] [Q] |
| A15 | 28175105 | Insulator plate (H) | △S1 | 3500065A | 0.01µF, AC400V, Capacitor | U11 | 12913569 | NADIS-2169, LED pc board ass'y |
| A16 | 27150168A | Shield plate (B) | △S2 | 25030262 | NRSM-103-30BU, Cartridge selector, operation section | U12 | 17988503D | NAFU-2203d, Fuse pc board ass'y [D] |
| A17 | 27160154 | Radiator | △C1 | | | | 17994503E | NAFU-2203e, Fuse pc board ass'y [G] [Q] |
| A18 | 27190349 | Holder (PC) | SI01b | | | | 17990503H | NAFU-2203h, Fuse pc board ass'y [W] |
| A19 | 27190011 | LCBS-8NS, holder | | 25050139 | NSCT-6P38, AC outlet [D] | | | |
| A21 | 27300750 | Strainrelief | △P1 | 25108010 | LG-2C, Terminal [G] [Q] [W] | | | |
| A22 | 28140457 | Cushion | | 253112 | AS-UC-4 #18, Power supply cable [D] | | | |
| A301 | 28184269 | Top cover [BLACK] | △P2 | | | | | |
| A302 | 28140020 | 4 x 10 x 40, Cushion | | 253127 | AS-CEE, Power supply cable [G] | | | |
| A500 | 17988121 | Front panel ass'y | | 253092-1 | AS-CEE-2, Power supply cable [W] | | | |
| A505 | 17968121 | Front panel ass'y [BLACK] | | 728320 or 728328 | 2-0.75BS16 BLK or 2-0.75BS16 GRY, Power supply cable [Q] | | | |
| A508 | 28140205A | Cushion [Black] | | 29380054 | BS-2, AC cable tag [Q] | | | |
| A509 | 28140532A | Cushion [Black] | | 25060044 | Ground terminal | | | |
| A510 | 28140206B | Cushion [Black] | | 25045086 | NPJ-2PRBL43, Input terminal | | | |
| A519 | 28140185 | Cushion [Black] | P3 | 25050211 | H0445, Fuse holder [W] | | | |
| A601 | 27175011C | Cushion | P5 | 252050 | 5A ST-6, Primary fuse [D], [W] | | | |
| A602 | 27170199 | Bottom board | △F901 | 252075 | 2.5 A-SE-EAK, Primary fuse [G] | | | |
| A62 | 27175044 | Leg | | 252075 | 2.5 A-SE-EAK, Primary fuse [W] | | | |
| A634 | 834430068 | 3TTS+16B(BC), Tapping screw | △F902 | 252070 | 1A-SE-EAK, Secondary fuse [G] | | | |
| A701 | 834430068 | 3TTS+6B(BC), Tapping screw | F701 | | | | | |
| A702 | 831430088 | 3TTW+8B(BC), Tapping screw | U1 | 17988554D | NAEQ-2154d, Equalizer amplifier pc board ass'y [D] [W] | | | |
| A703 | 838440089 | 4TTB+8C(BC), Tapping screw | | 17994554E | NAEQ-2154e, Equalizer amplifier pc board ass'y [G] [Q] | | | |
| A801 | 28321731A | Knob (VOL) | | 17988586B | NADA-2286b, Power amplifier pc board ass'y 1 [D] [W] | | | |
| A802 | 28321906 | Knob (VOL), [BLACK] | | | | | | |
| A803 | 28321723 | Knob (BAL) | | | | | | |
| A804 | 28322011 | Knob (BAL), [BLACK] | | | | | | |
| A805 | 28321726A | Knob (SP) | | | | | | |
| | 28322010 | Knob (SP), [BLACK] | | | | | | |
| | 28322023 | Knob (PUSH) | | | | | | |
| | 28321909 | Knob (PUSH), [BLACK] | U2 | | | | | |
| | 28321904 | Knob (POW) | | | | | | |

NOTE: [D] : Only 120V model
[G] : Only 220V model
[Q] : Only 240V model
[W] : Only 120V/220V model
[BLACK] : Only Black model

NOTE: THE COMPONENTS IDENTIFIED BY MARK △ ARE CRITICAL FOR RISK OF FIRE AND ELECTRIC SHOCK. REPLACE ONLY WITH PARTS NUMBER SPECIFIED.

PRINTED CIRCUIT BOARD PARTS LIST

EQUALIZER AMPLIFIER PC BOARD (NAEQ-2154d/e) PARTS LIST

| CIRCUIT NO. | PART NO. | DESCRIPTION |
|--------------------------|-----------------------|--|
| | ICs | |
| Q106 | 222570 | NJM4560DX |
| | Transistors | |
| Q101-Q104 | 2211783 or 2211782 | 2SA991(E) or 2SA991(F) |
| | Diodes | |
| D101-D104 | 223145 | 1S2076TD |
| | Capacitors | |
| C101 | 379122237 | 0.022 μ F, 50V, DEW |
| C103, C104 | 372123314 | 330pF, 50V, Styrene [G][Q] |
| C107, C108, C109 C110 | 379128225 | 0.0082 μ F, 50V, DEW [G][Q] |
| C111, C112 | 352751009 | 10 μ F, 25V, Elect. |
| C115, C116 | 372122215 | 220pF, 50V, Styrene |
| C119, C120 | 379124725 | 0.0047 μ F, 50V, DEW |
| C121, C122 | 379121034 | 0.01 μ F(J), 50V, DEW |
| C123, C124 | 379128224 | 0.0082 μ F, 50V, DEW |
| C125, C126 | 379122034 | 0.02 μ F, 50V, DEW |
| C127, C128 | 352721029 | 1000 μ F, 6.3V, Elect. |
| C129, C130 | 352780229 | 2.2 μ F, 50V, Elect. |
| C131, C132 | 379121225 | 0.0012 μ F, 50V, DEW |
| C141, C142 | 352751019 | 100 μ F, 25V, Elect. |
| | Etc. | |
| L101, L102 | 231030 | NCH-1070, Coil [G][Q] |
| S101a | 25065229 25045034 | NSS-63100, Remote switch NPJ-2PDBL10, INPUT Terminal |

POWER AMPLIFIER PC BOARD 1 (NADA-2286b/c) PARTS LIST

| CIRCUIT NO. | PART NO. | DESCRIPTION |
|---|--|--|
| | ICs | |
| Q519, Q520 | 222502 | NJM4558DX |
| | Transistors | |
| Q501, Q502 | 2211915 or 2211916 or 2211917 | 2SK240(GR) or 2SK240(BL) or 2SK240(V) |
| Q503-Q506 | 2211733 or 2211732 | 2SC1845(E) or 2SC1845(F) |
| Q507-Q512 | 2211455 or 2210803 | 2SA1015(GR) or 2SA733(P) |
| Q513, Q514 | 2211354 or 2211353 | 2SA949(Y) or 2SA949(O) |
| Q515, Q516 | 2211634 or 2211633 | 2SC2229(Y) or 2SC2229(O) |
| Q517, Q518 Q901 | 2211255 2201512 or 2201513 or 2201074 | 2SC1815(GR) 2SD1200(Q) or 2SD1200(R) or 2SD880(Y) |
| Q902 | 2201502 or 2201503 or 2201244 | 2SB889(Q) or 2SB889(R) or 2SB834(Y) |
| | Diodes | |
| D501-D504 D507-D510 D513, D514 D517-D520 | 223145 | 1S2076TD |
| D505, D506, D511 D512 | 225126 | GL-3PR1, LED |
| D515, D516 | 4000068 | VD1222, Varistor |

| CIRCUIT NO. | PART NO. | DESCRIPTION |
|-------------|-------------------------------------|---|
| D901, D902 | 2241232 or 2239754 or 2243294 | GZA-22Y or RD22E-B4 or MTZ22-D, Zener |
| | Capacitors | |
| C501, C502 | 372126805 | 68pF, 50V, Styrene |
| C505, C506 | 379121235 | 0.012 μ F, 50V, DEW |
| C509, C510 | 379122237 | 0.022 μ F, 50V, DEW |
| C513-C516 | 352752209 | 22 μ F, 25V, Elect. |
| C519, C520 | 379123935 | 0.039 μ F, 50V, DEW |
| C901, C902 | 352781019 | 100 μ F, 50V, Elect. |
| C903, C904 | 352754709 | 47 μ F, 25V, Elect. |
| C905, C906 | 352754719 | 470 μ F, 25V, Elect. |
| | Resistors | |
| R523, R524 | 442520684 | 6.8 Ω , 1/2W, Metal oxide film |
| R525, R526 | 442525614 | 560 Ω , 1/2W, Metal oxide film |
| R527, R528 | 442524334 | 43k Ω , 1/2W, Metal oxide film |
| R531, R532 | 5225019 | N10HR4.7KBD, Semi-fixed |
| R533, R534 | 442524724 | 4.7k Ω , 1/2W, Metal oxide film |
| R549, R550 | 442520474 | 4.7 Ω , 1/2W, Metal oxide film |
| R901, R902 | 441523914 | 390 Ω , 1/2W, Metal oxide film |
| | Etc. | |
| S301 | 25030195 | NRSM-146-30SS, Switch |
| S302 | 25030258 25045137 | NRSM-166-30SS, Switch NPJ-6PDBL52, INPUT terminal |
| P304, P306 | 25050140 | NJPS-3P-S, Socket |

INPUT SELECTOR SWITCH PC BOARD (NASW-2156a/b) PARTS LIST

| CIRCUIT NO. | PART NO. | DESCRIPTION |
|-------------|-----------|--|
| C331, C332 | 372122214 | 220pF, 50V Capacitors, Styrene [G][Q] |
| S303 | 25035442 | NPS-642-L406, Switch |
| P303, P305 | 25050140 | NJPS-3P-S, Sockets |

POWER AMPLIFIER PC BOARD 2 (NAMA-2157e/f) PART LIST

| CIRCUIT NO. | PART NO. | DESCRIPTION |
|-------------|---|---|
| | IC | |
| Q701 | 222584 | TA7317P |
| | Transistors | |
| Q601, Q602 | 2211732 or 2211733 | 2SC1845(F) or 2SC1845(E) |
| Q603, Q603 | 2211792 or 2211793 | 2SA992(F) or 2SA992(E) |
| Q605, Q606 | 2211923 or 2211924 or 2212653 or 2212654 | 2SC2824(O) or 2SC2824(Y) or 2SC3421(O) or 2SC3421(Y) |
| Q607, Q608 | 2211933 or 2211934 or 2212643 or 2212644 | 2SA1184(O) or 2SA1184(Y) or 2SA1358(O) or 2SA1358(Y) |
| Q617, Q618 | 2211733 or 2211732 | 2SC1845(E) or 2SC1845(F) |
| | Diodes | |
| D701 | 223862 | WL-01 |

| CIRCUIT NO. | PART NO. | DESCRIPTION |
|---|---|---|
| D702, D704 D703 | 223145 2240972 or 2240973 or 2239492 or 2239493 or 2243162 or 2243163 | 1S2076TD GZA6.2Y or GZA6.2Z or RD6.2E-B2 or RD6.2E-B3 or MTZ6.2-B or MTZ6.2-C |
| Coils | | |
| L601, L602 L603, L604 | 231015 230904 | S-0.8C B-20L-44, Core (FR) |
| Capacitors | | |
| C605, C606 C607, C608 C611-C614 C701 C703 C704 C706 C707 C708, C710 | 379121047 379124735 379121045 352722219 352732209 352784799 352743319 352744719 379122237 | 0.1 μ F, 50V, DEW 0.047 μ F, 50V, DEW 0.1 μ F, 50V, DEW 220 μ F, 6.3V, Elect. 22 μ F, 10V, Elect. 0.47 μ F, 50V, Elect. 330 μ F, 16V, Elect. 470 μ F, 16V, Elect. 0.022 μ F, 50V, DEW |
| Resistors | | |
| R601, C602 R603, R604 R607-R610 R615, R616 R619, R620 R617, R618 R623, R624 R629-R632 R639-R642 R713 | 442522224 442522214 442520224 4000080 441620154 4000061 441621604 442523304 | 2.2k Ω , 1/2W, Metal oxide film 220 Ω , 1/2W, Metal oxide film 2.2 Ω , 1/2W, Metal oxide film 0.47 Ω , 5W, Metal plate 1.5 Ω , 1W, Metal oxide film 0.33 Ω , 2W, Metal plate 16 Ω , 1W, Metal oxide film 33 Ω , 1/2W, Metal oxide film |
| Etc. | | |
| PL701 RL701 | 210183 25065036 | PL14V 0.06A W-2.0, Lamp NRL-4P3A-DC12-01, Relay |

LED CIRCUIT PC BOARD (NADIS-2287) PARTS LIST

| CIRCUIT NO. | PART NO. | DESCRIPTION |
|-------------|----------------------------------|--|
| D301-D306 | 225174 or 225173 27190316A | SLR55MC3N or SLR55MC3M, LED Holder LED |

SWITCH CIRCUIT PC BOARD (NASW-2163b) PARTS LIST

| CIRCUIT NO. | PART NO. | DESCRIPTION |
|------------------------------------|-----------------------------------|--|
| C311, C312 S305 S306, (S307) | 352781599 25035266 25035265 | 0.15 μ F, 50V, Capacitor, Elect. NPS-122-L230, Switch NPS-222-L229, Switch |

TONE CONTROLE PC BOARD (NATC-2164b) PARTS LIST

| CIRCUIT NO. | PART NO. | DESCRIPTION |
|--|--|---|
| Capacitors | | |
| C315, C316 C317, C318 C319, C320 C321, C322 | 379121235 379125625 379121025 379123335 | 0.012 μ F, 50V, DEW 0.0056 μ F, 50V, DEW 0.001 μ F, 50V, DEW 0.033 μ F, 50V, DEW |
| Resistors | | |
| R317 | 5148044 | N16RGMC250KMN30, Variable |

| CIRCUIT NO. | PART NO. | DESCRIPTION |
|-------------|----------|---------------------------------|
| R321 | 5148046A | N16RGM11C219K30, Variable |
| R323 | 5148045A | N16RQM11C110K180K30 Variable |

VOLUME CONTROL PC BOARD (NAVR-2166) PARTS LIST

| CIRCUIT NO. | PART NO. | DESCRIPTION |
|-------------|----------|---------------------------------------|
| R351 | 5172062 | N16RGL100KBTP30, Variable resistor |

SPEAKER SWITCH & POWER SUPPLY PC BOARD (NAPS-2167c) PARTS LIST

| CIRCUIT NO. | PART NO. | DESCRIPTION |
|-------------------------|--|---|
| Diodes | | |
| D951-D957 D959, D960 | 223841 223842 | GP-30G GP-15B |
| Capacitors | | |
| C951-C953 C954, C955 | 380504745 3504172 | 0.47 μ F, 160V, CF 15000 μ F, 59V, Elect. |
| Resistors | | |
| R753, R754 R951 | 441623914 442525104 | 390 Ω , 1W, Metal oxide film 51 Ω , 1/2W, Metal oxide film |
| Etc. | | |
| | 25030257 25045164 27300731 27300732 | NRSM-164-30SS, Switch HLJ4317-01-3020, Head- phone jack Plate (C) Plate (P) |

SPEAKER TERMINAL PC BOARD (NATS-2168/a) PARTS LIST

| CIRCUIT NO. | PART NO. | DESCRIPTION |
|-------------|-----------------------|--|
| C751, C753 | 379121025 25060039 | 0.001 μ F, 50V, Capacitor DEW [G][Q] NTM-4PDMN10, Terminal |

LED CIRCUIT PC BOARD (NADIS-2169) PARTS LIST

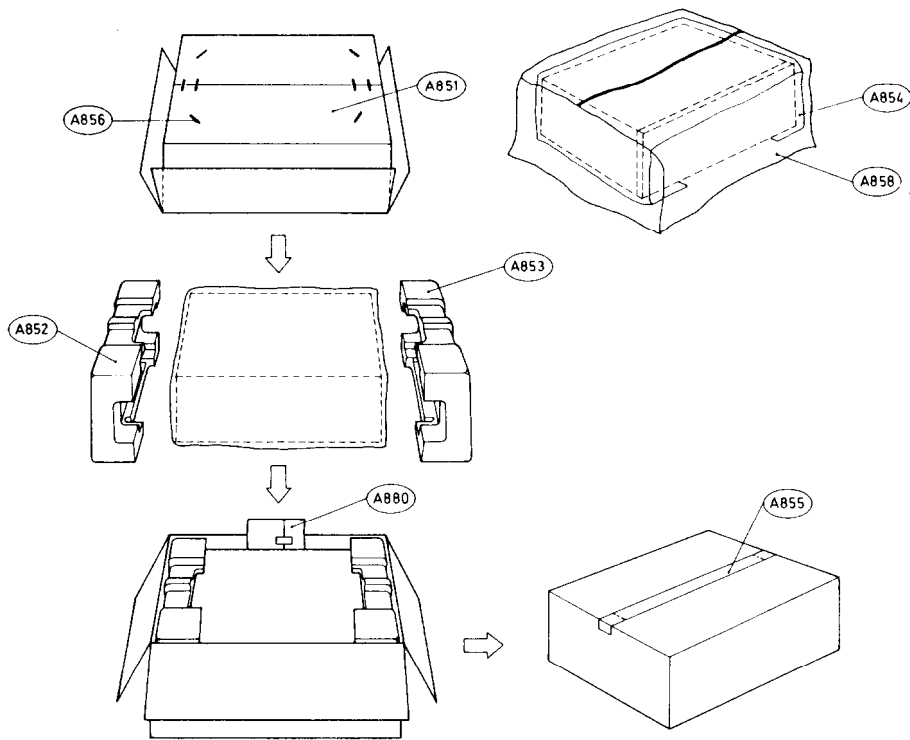
| CIRCUIT NO. | PART NO. | DESCRIPTION |
|-------------|-------------------------------|--|
| D711 | 225174 225173 27190319A | SLR55MC3N, LED SLR55MC3M, LED Holder LED |

FUSE PC BOARD (NAFU-2203d/e/h) PARTS LIST

| CIRCUIT NO. | PART NO. | DESCRIPTION |
|-------------|--|---|
| | 250113 25050065 22360462 29360405 29355121 | S-N5051, Fuse holder [D] YSH403T, Fuse holder [G][Q] 5A/125V, Fuse label [W] T2.5A/250V, Fuse label [G][Q] P-2, Caution label [D] |

NOTE: [D] : Only 120V model
[G] : Only 220V model
[W] : Only 120V/240V model
[Q] : Only 240V model

PACKING PROCEDURES



| REF. NO. | PART NO. | DESCRIPTION |
|----------|---------------------|-----------------------------|
| A851 | 29051084 | Master carton box |
| | 29051085 | Master carton box [BLACK] |
| A852 | 29090488C | Pad, left |
| A853 | 29090489B | Pad, right |
| A854 | 29095012-1 | 500 × 800, Protection sheet |
| A855 | 260012 | Damplon tape |
| A856 | 282301 | Sealing hook |
| A858 | 29100038A | 720 × 950, Poly bag |
| A880 | Accessory bag ass'y | |
| | 29340845 | Instruction manual [D] |
| | 29340846 | Instruction manual [G] [W] |
| | 29365006-7 | Warranty card [U] |
| | 29358002C | Service station list [U] |
| | 29100006A | 350 × 250, Poly bag |
| | 25055018 | CV-K-1, Conversion plug [W] |

NOTE:

- [U]: Only U.S.A. model
- [D]: Only 120V model
- [G]: Only 220V/240V model
- [W]: Only 120V/220V model
- [BLACK]: Black model